

Innovative detailed solutions – HOPPE products that make work easier and save time

In workshops and on building sites every step must be perfectly executed, as the time allowed for installation of doors and windows is becoming ever shorter. Buildings are increasingly being constructed in record time. Every lacking tool and every incorrectly packaged window or door handle can play havoc with the tight schedule. With the innovations presented at this year's fensterbau trade fair in Nuremberg, HOPPE has taken another major step towards solving this problem.

Window handles

One example is the **adjustable spindle**. There are many different profile systems available in various thicknesses for aluminium, wooden and PVC windows. Many installers are familiar with the difficulties that this presents: having to know the exact profile thicknesses for their projects and having to hold the appropriate handles in stock or possibly even order them specially. This entails logistical and administrative costs and is often laborious – particularly if it turns out at the customer's premises that a different spindle length is needed after all.

With the patent-pending, adjustable spindle for window handles, however, the right spindle length for a variety of window profiles is always to hand. The principle behind it is as effective as it is simple: Adjustment to the depth of the specific window profile is enabled by a pressure spring in the inside of the window handle. The spring mechanism presses the spindle smoothly into the square recess of the gear nut, thus ensuring a perfect fit. This allows it to be used with an installation depth range of up to 10 mm.

The adjustable spindle is used in the **Secustik**[®] window handle of the Toulon series, which due to its patented jamming-device hinders turning of the spindle and therefore moving of the window gear from outside.

The **Toulon** window handle series is completely new to the range. HOPPE has used distinctive angular shapes, which are perfectly in keeping with current design trends. The extensive array of products in this series ranges from window handles to matching patio door sets, handles for tilt/slide doors and lift/slide door sets.



Name of the picture:
Adjustable spindle_0810.jpg



Name of the picture:
Toulon_0737.jpg

Door fittings

When it comes to the assembly of door handles, the **HOPPE Quick-Fit connection** clearly shows its strengths. The key point of this connection is the special blocking mechanism in the receiver handle, which means that fixing with Allen screws or transverse spindles is no longer necessary. The solid spindle is grasped and clamped securely and without play. This takes place without the use of any tools, as the two handle parts are simply put together. Door handles can therefore be mounted in less than 10 seconds, which represents a time saving of up to 75 percent. The fitting can be quickly and easily removed using the Allen key supplied by HOPPE or a screwdriver.



Name of the picture:
Quick-FitPlus_E1400Z.jpg

HOPPE Quick-FitPlus is the logical further development of the tried and tested HOPPE Quick-Fit connection. This technology enables the attractive flat roses, which are only 2 mm thick, to be fitted with no screws and almost no need for tools. In combination with the many attractive handle shapes these make a striking feature on any door.

The assembly of HOPPE half sets on the inside of entrance doors has also been made quicker and simpler, as the innovative **mounting module for roses** combines a rose base, spring cassette and HOPPE solid spindle in a single compact unit. And fewer component parts always means fewer steps! Thanks to the integrated spring cassette, the module can be used on the left and right. It also supports the lock spring when the handle is being restored to the 90° position. The use of steel supporting lugs prevents the rose base from twisting and guarantees long-lasting high stability. The mounting module for roses can be used on wooden entrance doors as well as those made of aluminium or PVC.



Name of the picture:
Mounting module for roses_1810H.jpg

Antimicrobial surfaces

With **SecuSan**, HOPPE offers door and window handles with an antimicrobial surface for use wherever effective measures are required to combat the spread of germs, for example in hospitals or retirement and care homes. The coating of SecuSan hardware prevents microbial growth on a lasting basis. (More information on SecuSan can be found in the enclosed press release.)



Name of the picture:
SecuSan_E1140Z.jpg

SecuSan – The new hygiene standard

SecuSan door and window handles from HOPPE are an effective measure against the spread of germs, as they have an antimicrobial surface that reduces the growth of germs such as bacteria, algae and fungi. In Germany, between 400,000 and 600,000 people a year pick up infections in association with medical treatment as an in- or outpatient. In many cases these are not droplet infections as spread by coughing and sneezing, but instead are caused by people coming into direct contact with the pathogens via their skin.



Name of the picture:
SecuSan_stamp.eps

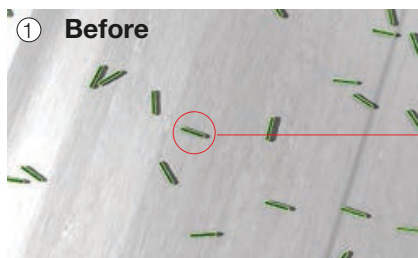


Name of the picture:
SecuSan_OP.jpg

Here the focus is primarily on door handles, as hundreds of people a day open and close the doors in hospitals and doctor's surgeries – as well as other public buildings such as day centres for the elderly, schools and kindergartens. The probability of becoming infected from these handles is relatively high – especially for those with a weakened immune system.

SecuSan – a good decision

The SecuSan surface, which contains silver ions embedded in a carrier system of ceramic glass, does not lose any of its effectiveness even when cleaned at regular intervals.



High bacterial load on the surface



Silver ions destroy the cell membrane of the germ.



Germ is killed.



There is a significant reduction in the bacterial load on the surface.

Name of the picture:
SecuSan_germs-1.jpg
SecuSan_germs-2.jpg
SecuSan_germs-3.jpg
SecuSan_germs-4.jpg

Press release

fensterbau 2014 – SecuSan

Incidentally, the effectiveness of SecuSan has been proven in independent laboratory tests in accordance with the standard requirements of JIS Z2801:2000 and ISO 22196:2011.

Due to the composition of the surface, the door handles achieve an extremely high corrosion resistance, which corresponds to grade 5 according to EN 1670.

Simple retrofitting

Refitting buildings with SecuSan door or window handles in the event of a renovation is very simple, as the handles have not technically been modified and correspond to DIN EN 1906, category of use: grades 3 and 4. Naturally, the sets are also available in fire-resistant and anti-panic versions. SecuSan handles come in a total of six series, each as a door handle set on rose with or without escutcheon and a matching window handle. They are available in a choice of aluminium or stainless steel.



Name of the picture:
SecuSan_nursery.jpg
SecuSan_clinic.jpg

With the SecuSan door and window handles, HOPPE has developed a solution that provides active protection in the very places where it is urgently required: Be it in clinics, schools, public buildings, the hospitality sector, industry or leisure facilities – SecuSan handles help to ensure high hygiene standards wherever people are present in large numbers.