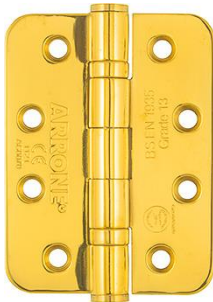


# Product data sheet

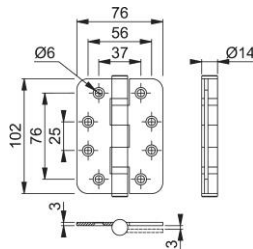
Plus

AR8180



ARRONE ball bearing hinge:

- Material: Stainless Steel
- Hinge Grade: Grade 13
- Shape: Radius
- Unit of measure (pack size): Sold as a pair
- Door weight: Suitable for doors weighing up to 120 kg
- Fixing: 16 x stainless steel pozidrive countersunk wood screws
- Testing: **BS EN 1935:2002** (Classification: 4 | 7 | 6 | 1\* | 1 | 4 | 0 | 13); **BS EN 1634** Part 1. Assessed for use on 30, 60, 90 and 120 minutes timber fire doors and 240 minutes on steel fire doors.
- CE Marked: AC0070, UKCA Marked: AC7678
- Certifire approved: CF369; CE DOP: HUK0016, UKCA DOP: HUK0016-UK



Article number	89002156
Product ref.	AR7072-PVD-A1
EAN-Code	5051358069817
Country of origin	China
CN-Code	83021000
Dimension	102x76 mm
Door type	wooden door
Fixings	Timber door
Dimensions	102x75x3 mm
Bearing	2 Ball Bearing Hinge
Shape	
Leaf corner	radius corners
Drill	4 holes template drilled, countersunk
Material thickness	3 mm
Finish	polished brass, PVD coated
Range	ARRONE Range
Packing unit	1
Outer carton	40