

Product data sheet

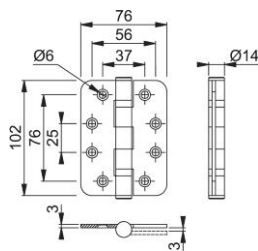
Plus

AR8180



ARRONE ball bearing hinge:

- Material: stainless steel
- Hinge grade: grade 13
- Shape: radius
- Unit of measure (pack size): sold as a pair
- Door weight: suitable for doors weighing up to 120 kg
- Fixing: 16 x stainless steel pozidrive countersunk wood screws
- Testing: **BS EN 1935:2002** (Classification: 4 | 7 | 6 | 1* | 1 | 4 | 0 | 13); **BS EN 1634-1**.
Assessed for use on 30, 60, 90 and 120 minute timber fire doors and 240 minute on steel fire doors.
- CE Marked: AC0070, UKCA Marked: UK-AC7678
- Certifire approved: CF369, CE DOP: HUK0021, UKCA DOP: HUK0021-UK



Article number	87105953
Product ref.	AR9292-PSS
EAN-Code	5051358036949
Country of origin	China
CN-Code	83021000
Material	stainless steel: grade 201 (A1)
Dimension	102x76 mm
Door type	wooden door
Fixings	Timber door
Dimensions	102x75x3 mm
Shape	
Leaf corner	radius corners
Drill	4 holes template drilled, countersunk
Material thickness	3 mm
Finish	PSS polished stainless steel
Range	ARRONE Range
Packing unit	2
Outer carton	40