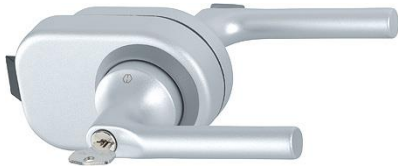


# Product data sheet

## Arles

HCS GD A197S

**duraplus**<sup>®</sup>



Article number	2574067
EAN-Code	4012789077933
Country of origin	Germany
CN-Code	83024110
Door thickness	8 mm
Version	15 mm cylinder/turn
Door type	glass door/partition door
Finish	F1-2 aluminium matt silver effect
Range	Core Product Range
Packing unit	1
Outer carton	10

**HCS**<sup>®</sup> with aluminium door handles and keyed cylinder/turn for interior doors:

- Door type: for glass and partition doors (door thicknesses 8-10 mm)
- Version: keyed locking/non-keyed locking
- Adapter: aluminium with nylon base
- System core: aluminium pressure die-casting
- Latch tube: aluminium with thread
- Latchbolt: glass fibre reinforced nylon, low-noise
- Strike plate: none
- Fixing: via adapter, latch tube and decorative rings
- Special feature: combines door hardware and lock in a single system, door must be prepared accordingly

